

# INTERNSHIP SPOTLIGHT

## Delilah Trott

**Graduation Semester & Year:** Spring '25

**Semester & Year of Internship:** Spring '25

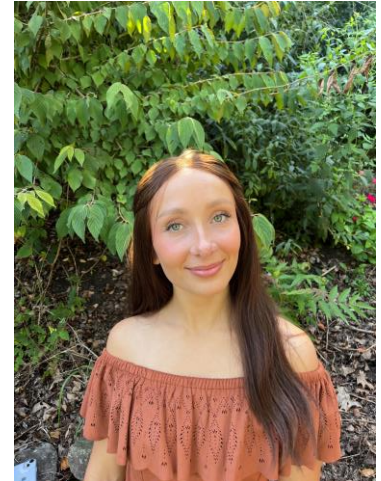
**Major:** Public Policy

**Hometown:** Reading, MI

**Hobbies:** Being outside, painting, and being with my cat!

**Campus Activities:** Res Life, Residence Hall Association, Pitt Fight

**Future Plans/Career Goals:** To continue nonprofit and advocacy work



- **Internship (company/your title):**  
Protect PT/General Intern
- **How did you find your internship?**  
Through the Internship Coordinator, Kristen Stratton!
- **What were your duties?**  
As a general intern, I helped around the office in different areas with different projects, including event planning and fracking/ well maps!
- **How many hours per week were you at your internship site?**  
Around 10-12 hours
- **What did you enjoy most about your internship?**  
The connections I made with the people I worked with.
- **What was the most difficult aspect of the internship?**  
Keeping up with their fast-paced work environment and the policy changes that Protect PT was working with
- **How did your experience at UPG and within the Public Policy major prepare you for your internship?**  
Pitt-Greensburg helped prepare me for a professional setting and helped me prepare for the workplace
- **How has your internship prepared you for a career?**  
My internship really got my foot in the door. I feel more prepared, and I am very excited to continue my nonprofit work
- **What recommendations do you have for other students about doing an internship?**  
Be confident! No one expects you to be the perfect intern; this is a learning experience, so learn as much as you can!

*√By checking this box (or initialing next to it) and emailing this document to the campus Internship Coordinator, I give permission to University of Pittsburgh Greensburg to utilize this document along with the photo provided in media publications such as the UPG website, campus bulletin boards, and additional media outlets.*